

Architects/Landscape Architects: Urbscapes | Location: Ahmedabad, India

# Lunar Landscapes

Phases of moon

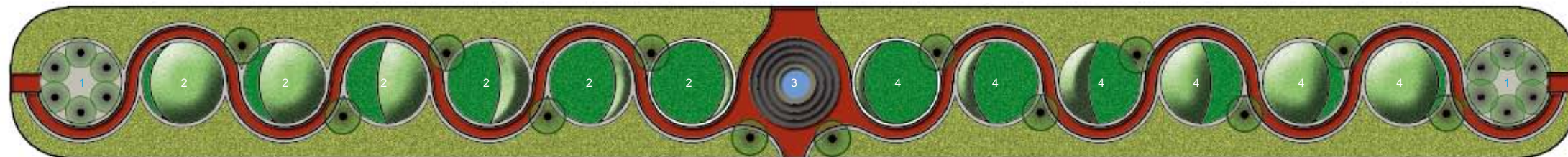
Situated in the suburbs of the city of Ahmedabad, the residential township “Aananda Exotica” by Abhinav developers, called for a landscape idea for the common plot and the central strip garden.

The design challenge was to design landscape for a linear strip measuring 10m×100m, which would be visible from the over-spilling terraces of the adjoining bungalows, along with the park for the club house. The design idea for the linear garden was to bring something a suburb offers; sky view, moon, sun rise, sun set, etc., which the urban life misses.



**SITE PLAN**

- 1. Main site entrance
- 2. Club house
- 3. Weekend homes
- 4. Central common plot



**Project Name:**

Lunar Landscapes

**Completion Date:**

2015

**Principal Landscape Architects:**

Nidhi Parikh, Narendra Mangwani

**Design Assistance:**

Jay Bhanushali, Avni Kanani

**Client:**

Abhinav Developers

**Landscape Area:**

2,500sqm

**Photography:**

Urbscapes

**LUNAR LANDSCAPE**

- 1. "Poobam" plaza
- 2. Waning phase
- 3. "Amavasya kund"
- 4. Waxing phase

Urbscapes decided to take up phases of moon which one tends to neglect, even though it occurs every fortnight. The waning and waxing moons became inspiration to modulate the soil and create forms, through which the user mingles and experiences the linearity of the parks through the meandering pathways.

Beginning through the full moon "Poonam" plaza, one travels through the waning crescents and reaches the central "Amāvāsyā" plaza, a sunken black kadappa kund with water fountain, which leads to waxing crescents and reaches to the other end, "Poonam" full moon day plaza which is white marble paved with set of five

trees.

The entire journey of moon of every fortnight is carved on the ground, to depict the phases through which moon passes and showcases its life span, of birth, death and rebirth (Incarnation). This called of soil engineering to create mounds to show the form of the stages of the moon, differentiated with two types of grasses and surrounded by a palette of selective native plant species offering variety of colors and aroma, day and night.

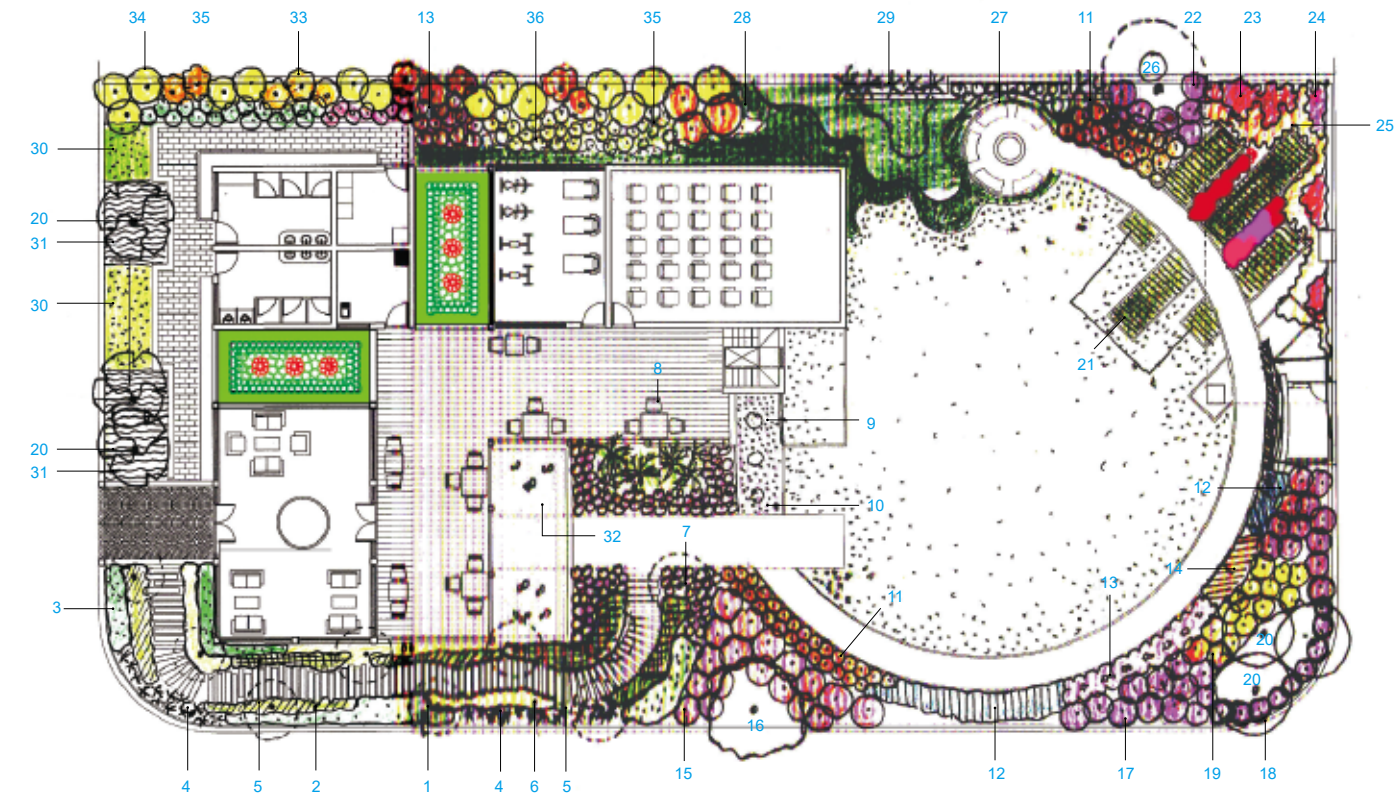
All the bungalows over look this central Lunar Landscape, and one views these different phases

of the moon on ground, and can reflect back to the moon in the sky, and enjoy in the suburbs, away from the hustle and bustle of the urban metro life.

The feature wall of the club house landscape, hold the signage and the logo, offering the image of the landscape design in metal plates. Surrounded by the floral landscape the central gathering space explores colors in flooring using stonecrete as a material. The feature wall holds this circular space along with the service blocks behind and creates a prelude to the "Lunar Landscapes."



Panaroma of lunar landscapes



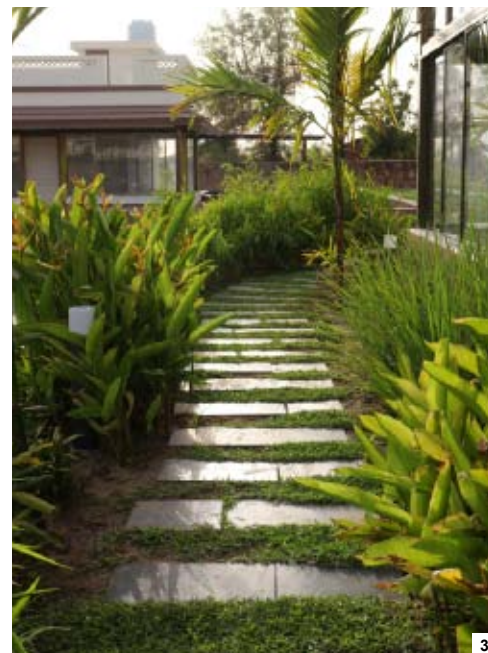
**CLUB HOUSE PLANTING PLAN SKETCH**

**PLANT LIST**

- |                              |  |                                  |
|------------------------------|--|----------------------------------|
| 1. Areca catechu             | 13. Hibiscus dwarf 'Marble' red          | 25. Ixora chinensis              |
| 2. Heliconia psittacorum     | 14. Hamelia patens                       | 26. Spathodea campanulata        |
| 3. Rhapsis excelsa           | 15. Calliandra haematocephala            | 27. Pennisetum 'Red'             |
| 4. Bambusa ventricosa        | 16. Callistemon citrinus                 | 28. Stenotaphrum                 |
| 5. Spathiphyllum clevelandii | 17. Stachytarpheta indica                | 29. Bambusa ventricosa           |
| 6. Chlorophytum comosum      | 18. Jatropha                             | 30. Ipomoea batata 'Green'       |
| 7. Day lily                  | 19. Bauhinia tomentosa                   | 31. Wedelia trilobata / Rhoeo    |
| 8. Areca palm                | 20. Plumeria rubra                       | 32. Water lilies 'Blue', 'White' |
| 9. Agave filifera            | 21. Chlorophytum/Dwarf canna (mix color) | 33. Caesalpinia pulcherrima      |
| 10. Rhoeo                    | 22. Musenda 'Pink'                       | 34. Tecoma gaudichaudi           |
| 11. Tecomaria capensis       | 23. Euphorbia millii                     | 35. Jasminum sambac              |
| 12. Angelonia angustifolia   | 24. Lantana sellowiana                   | 36. Thryallis glauca             |



1. Arrival plaza
2. Walkway through tropical planting
3. Palate walkway holding the lawn



**CLUB HOUSE GARDEN LANDSCAPE LAYOUT**

1. Entrance
2. Arrival court
3. Tropical planting
4. Lily pool
5. Wooden walkway
6. Display of colors (Medium sized planting)
7. Palette walkway
8. Congregational green
9. Feature wall
10. Shrub bands
11. Seating
12. Mounds
13. Screen wall
14. Palm courts
15. Semi-covered deck
16. Brick walkway